

ALXB15i — Ethernet-Wi-Fi Bridge

The Alinket ALXB15i product can realize the bridging function between Ethernet interface and Wi-Fi. Through the PC configuration software developed by Alinket, the original Ethernet devices can be wireless flexibly and quickly, and the cost of the innovation of the IoT will be the lowest.



ALX B15i	/S	Silvery Gray
	/A	Azure
	/B	Dark Black

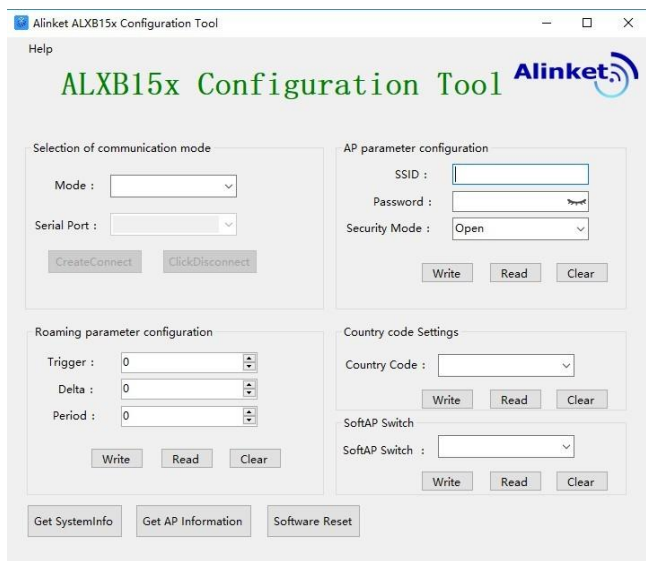
Highlights

- External dual antenna design make the transmission faster and more stable
- L2F, plug and play
- Specialized PC configuration tool, simple and quick
- Fast Roaming
- IEEE802.11 ac/a/b/g/n, 2.4GHz & 5GHz
- Two indicator lights are configured to visually reflect the working state of the equipment



Applications

- Medical and Health
- Industrial control and Monitoring
- Environment and Energy
- Smart office and Smart home
- All terminal devices that need wireless network port



Interfaces

- RJ45*1
- Micro USB*1
- Two status indicators: Power and Network
- SMA*2
- A reserved function button

ALXB15i Specification

WiFi protocol		IEEE802.11 ac/a/b/g/n, 2.4GHz/5GHz
Security		Security authentication: WEP_PSK、WPA/WPA2_PSK; Encrypt algorithm: AES、TKIP、MIX
Core		ARM Cortex M4
Eternal Memory		1MB Flash
TX Power	2.4G	+17.5dBm(11b 11Mbps)、+17dBm(11g 36Mbps)、+16dBm(11n MCS6)
	5.8G	+16dBm(11a 36Mbps)、+15.5dBm(11n MCS5)、+14dBm(11ac MCS5)
RX sensitivity	2.4G	-88dBm (11b 11Mbps)、-84dBm (11g 36Mbps)、-78dBm (11n MCS6)
	5.8G	-83dBm (11a 36Mbps)、-78dBm (11n MCS5)、-77dBm (11ac MCS5)
Antenna specification	Black/White	SMA, 3dbi
Size(without antenna)		82mm (L) * 45mm (W) * 22mm (H)
Ethernet interface		10M/100M self-adaption
USB		1、Power supply: 5V/1A 2、Communication: network configuration and firmware upgrade
Status indicator		Two: Power and Network
Operating temperature		-30°C ~ 85°C

■ Technical Support

E-mail: sales@alinket.com

Tel: +86 021-58651708

Website: www.alinket.com

Auto link Everything



Please follow our Wechat official account for more informations.

About Alinket Technology, INC.,

Alinket offers a range of leading cloud-connected wireless communication controllers including Wi-Fi, Bluetooth, BLE, and Wi-Fi + BT/BLE. Alinket is building an effective eco-system for the IOT world.

